

Architecture As A Tool For Transformative Physical Development

@ FINDING PATHWAYS IN EDUCATION
VICTORIA UNIVERSITY & UNTL

Salvador Pires

B.Arch(1st Cls Hnrs)/M.Arch.

PIRES ARCHITECTS

pires.architects@gmail.com

13/07/2015

- Architecture & Missions
- Example of Studios
- Current Challenges
- Recommendations

Architecture & Missions

- Architectural ideas reflect the spirit of a time & provide a solution to problems or a global major concern of a nation of a time
- Building design processes should be seen also as social sciences rather than merely limited to physical composition or solving technical problems (cultural, environmental, social, economic aspects of the design)
- Architecture plays an important role in planning for development

Example of Design Studios

- Weak Architecture
- Regionalism: Vernacularism, Pastiche, Critical Regionalism
- Neo-Postmodernism

Weak Architecture

(pre-determined rational approach)

- Achieve maximum benefits with minimal physical interventions through spatial functional relationships in compositions
- Integrating building with landscape, the environment and infrastructure
- Ambiguity of functions according time and needs





Critical Regionalism

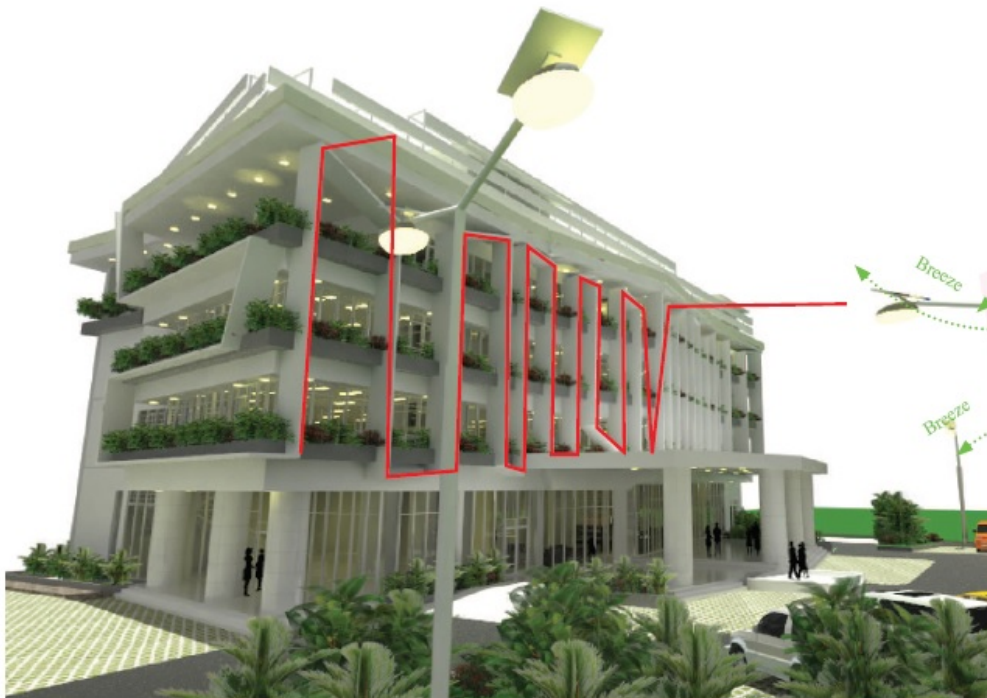
(Pre-determined Rational)

- Interpret tradition use of modern material instead of traditional materials
- Adopting modern construction technique for fast mass production
- Extending and interpret traditions
- Integrate building with the landscape and the environment (responding to orientation of the sun, prevailing wind, use of natural cooling, light diffuser, micro-climate, ecological niche)
- Responding to the local social, cultural & economic aspects

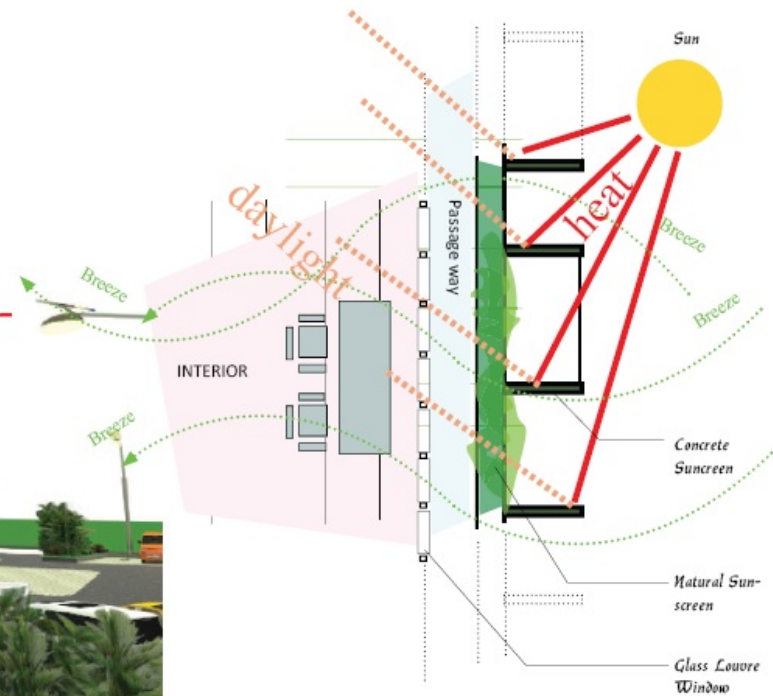




ENVIRONMENTAL ADAPTATION



Northeast View



Sun & Cross Ventilation Diagram
FROM TOP VIEW

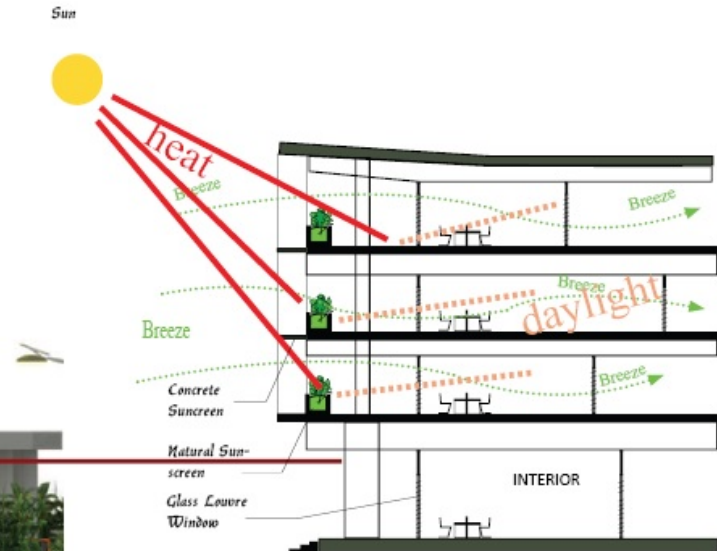
01/07/14

www.piresarchitects.com

PIRES
architects
PIRES ARCHITECTS

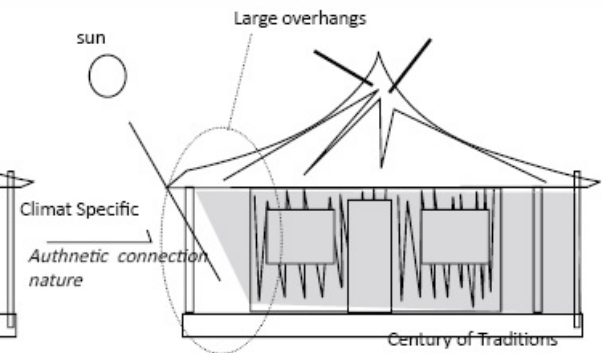
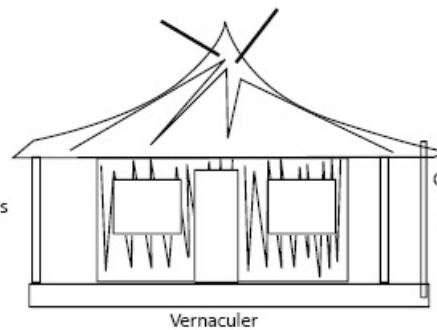
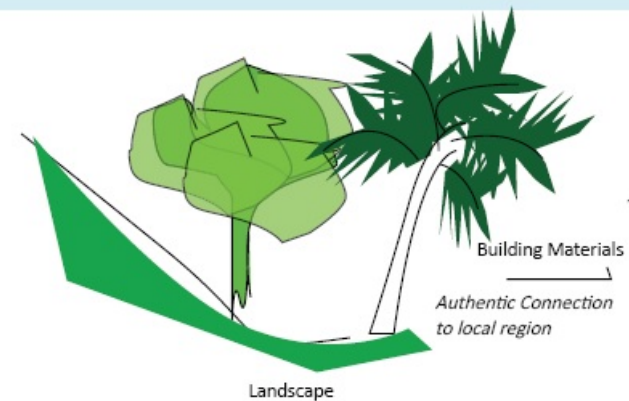


East Elevation



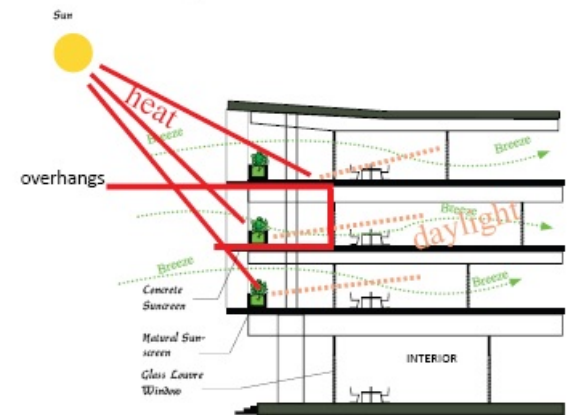
Sun & Cross Ventilation Diagram
FROM SECTIONAL VIEW

CULTURAL/TRADITION REINTERPRETATION & REPRESENTATION



Reinterpretation
of overhangs

Abstract connection to
tradition



Authentic Connection
to local nature

Sun & Cross Ventilation Diagram
FROM SECTIONAL VIEW

01/07/14

www.piresarchitects.com

PIRES
architects
PIRES ARCHITECTS

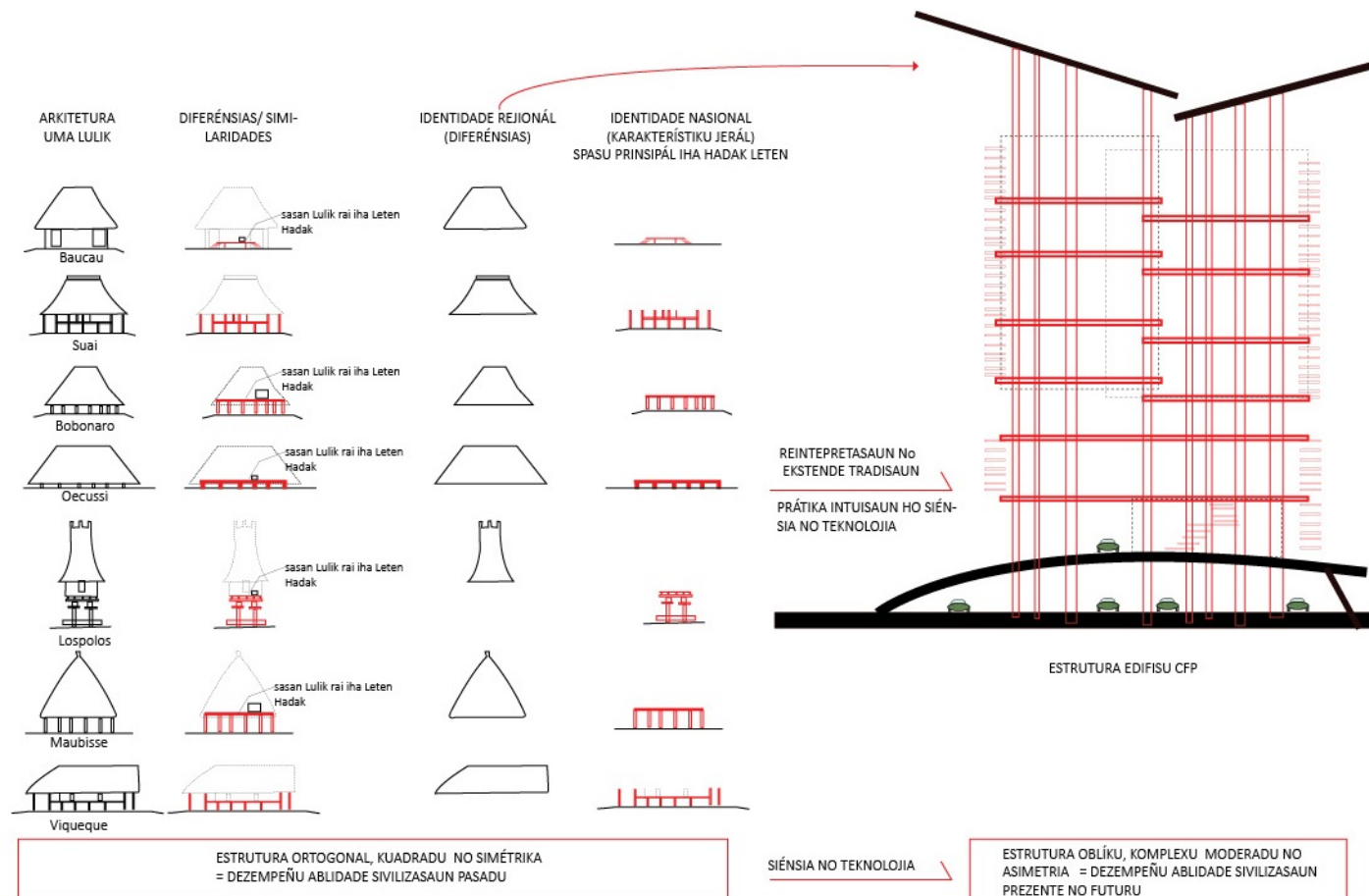




Neo-Postmodernism

(Intuitive & Rational Approach)

- Use available construction technique to form a new composition promoting sense of development, new sense of identity and spirit.
- Re-interpret local traditions (use of practical symbolic functions, vernacular and its relationships to the environment)
- Provide spatial functional adjacencies
- Integrating buildings into landscape and environment for energy efficiency

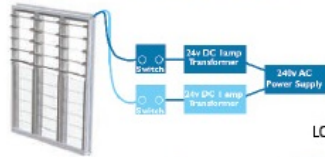


REFERÉNSIA UMA LULIK: CINATTI, R. et. al. (1987)
Arquitetura Timorense. ICT/ Museu de Etnologia.

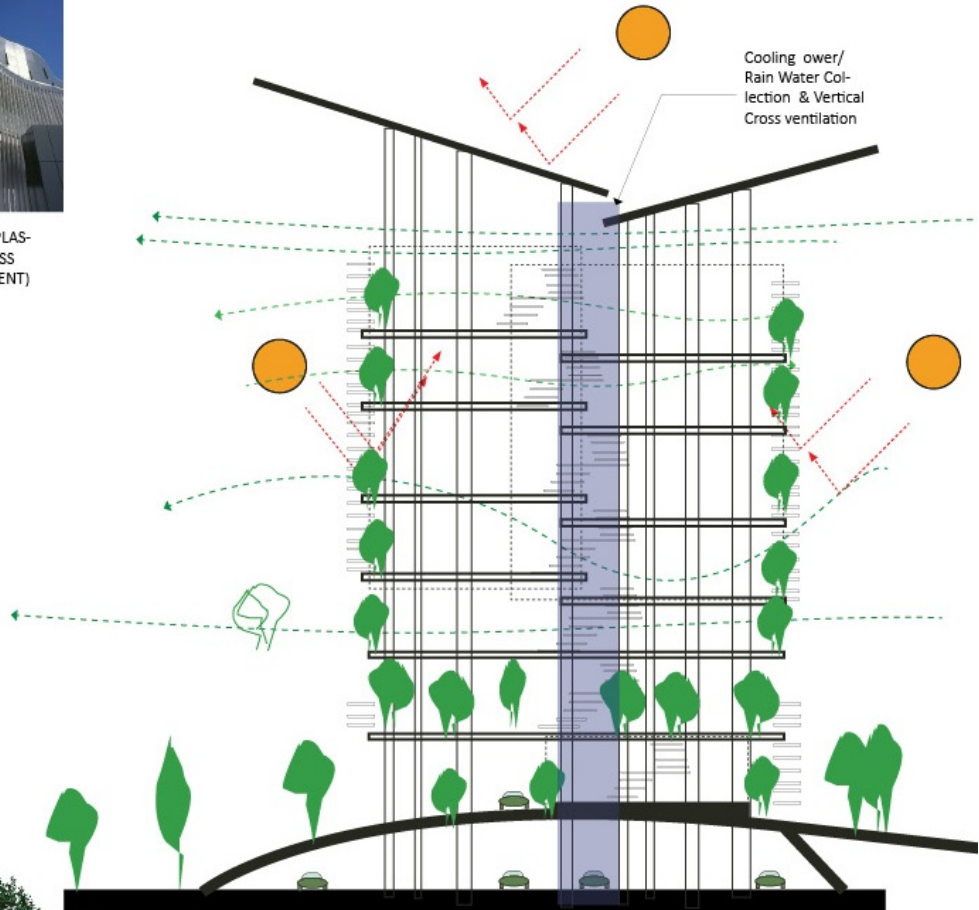
COPY RIGHT @ PIRES ARCHITECTS 2013



AEROBRIS LOUVRES (PLASTIC BASED MATERIAL LESS IMPACT ON ENVIRONMENT)



LOUVRES

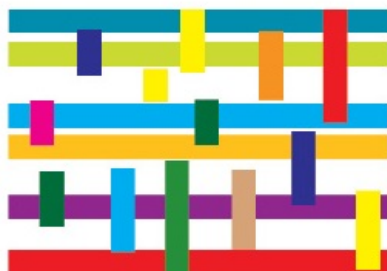


ANIN/AIR FLOW FENESTRATION

COPY RIGHT @ PIRES AR



Prática intuitiva no neesidades rasionál iha arte no homan iha kultura Timor ba iha dezenu Estatal



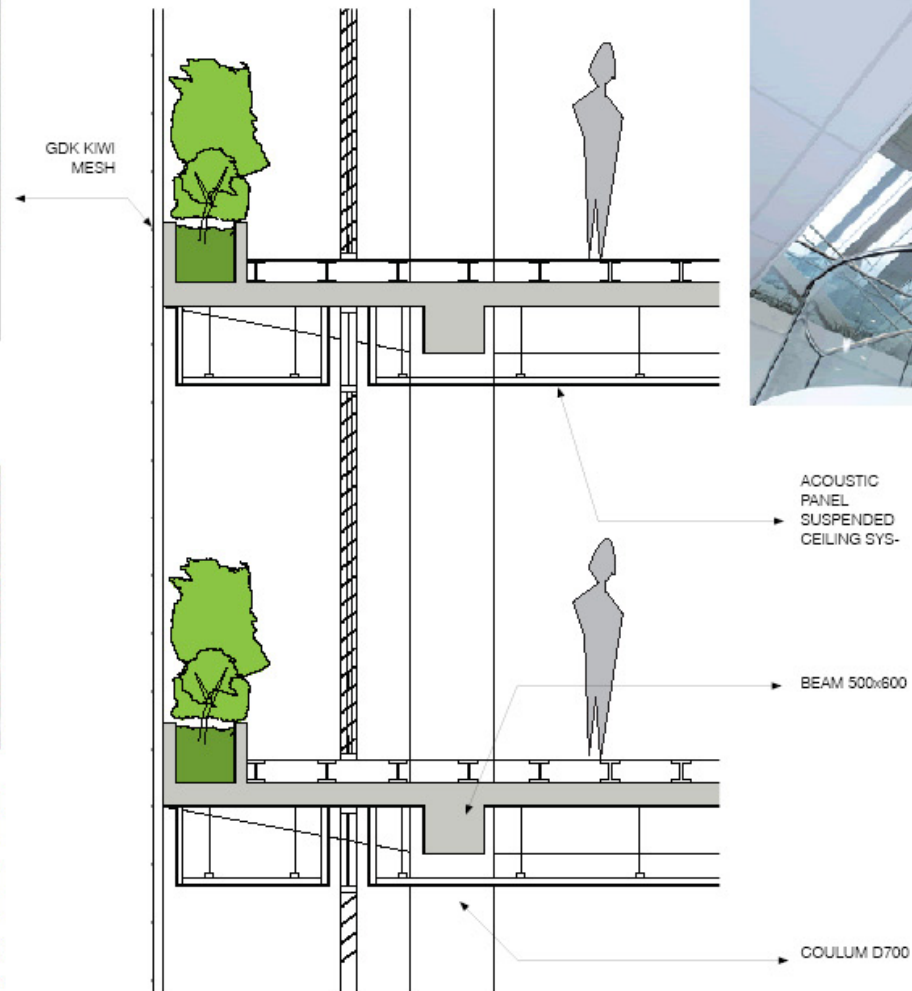
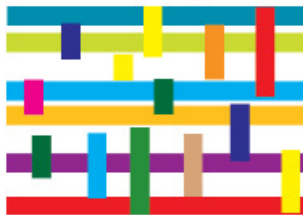
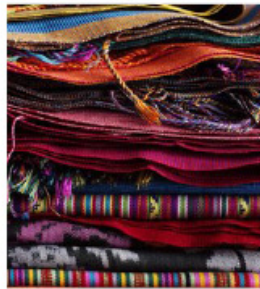
REINTEPRETASAUN NO
EKSTENDE TRADISAUN

PRÁTICA INTUISAUN HO
SIÉNSIA NO TEKNOLOJIA



COPY RIGHT @ PIRES ARCHITECTS 2013

PIRES
Architects
PIRES ARCHITECTS



FABRIC

PIRES architects
PIRES ARCHITECTS

PAPEL TAIS
TIMOR NIAN
(The roles of
Timor Tais)

Prátika intuisaun
no nesesidades
rasional iha arte no
homan

(Intuition and ration-
al practices in the
arts and crafts)

Markadu sosiál/
ekonómiku

(Social business
and economics)



Serimonia kulturál no identi-
dade: fetosan, umane, lia
mate no lia moris

(Cultural ceremonies and
identity)



Serimonia ofisiál: Bemvindu

Official welcoming ceremony



Various sources: online images

Current Challenges

- Lack of approach in Building Design (fit for the purpose)
- Most design projects are only concerning the physical delivery of political program
- No Planning Schemes, Architects and Engineers Registration Board, Building Codes & Housing Policy.
- Existing curriculum is established based on engineering approach

Cutting off trees







Heat Problem in Urban Area



Plant More Trees for Natural Cooling & Urban Heat Reduction



Recommendations

- Architectural studies should not only equip students with technical knowledge but also with visions to long-term solving problems Timor and the globe are now facing
- Architectural studies should be in forms of project-based design studios with various design approaches
- Architectural studies should allow for the investigation of the evolution in architectural visions and missions
- Architectural studies should be formulated along with the orientation of TL's development vision

Obrigado Wa'in!